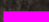
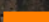
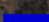

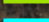
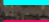

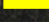


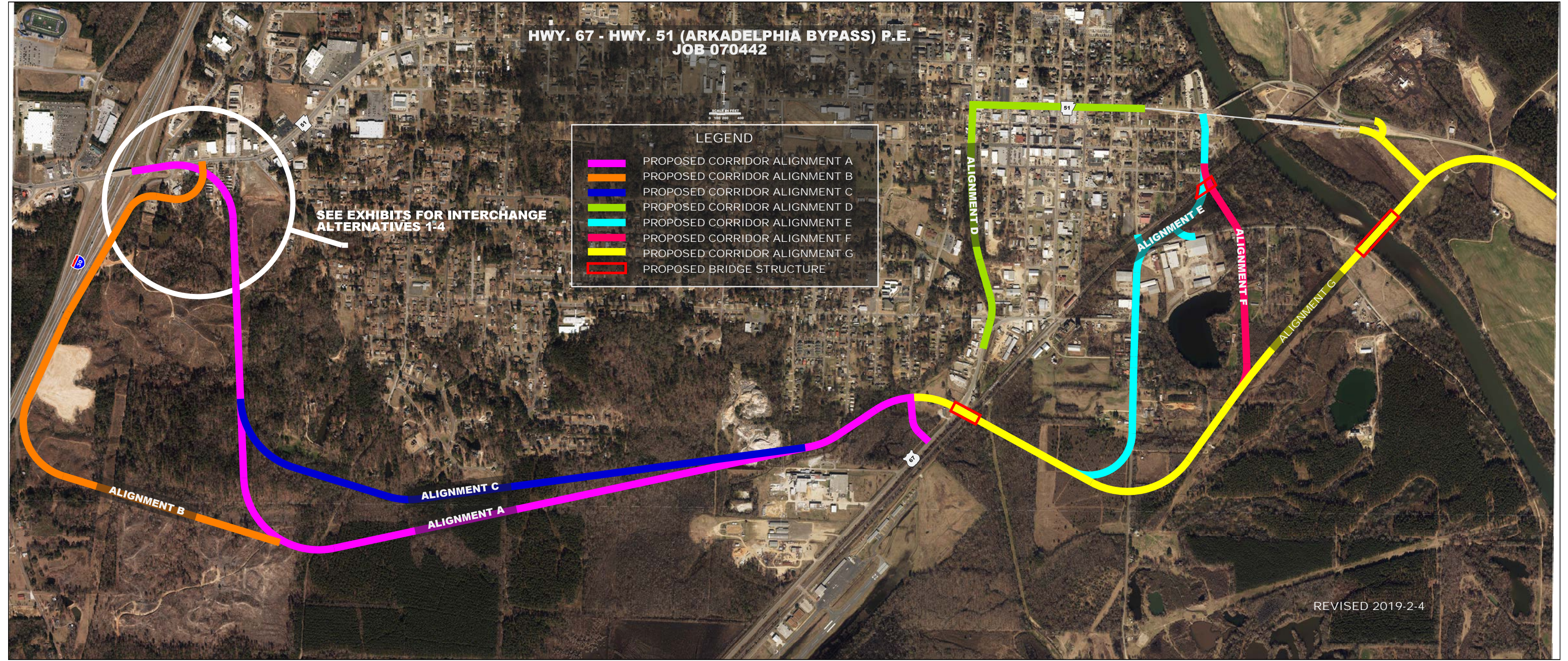
**HWY. 67 - HWY. 51 (ARKADELPHIA BYPASS) P.E.  
JOB 070442**

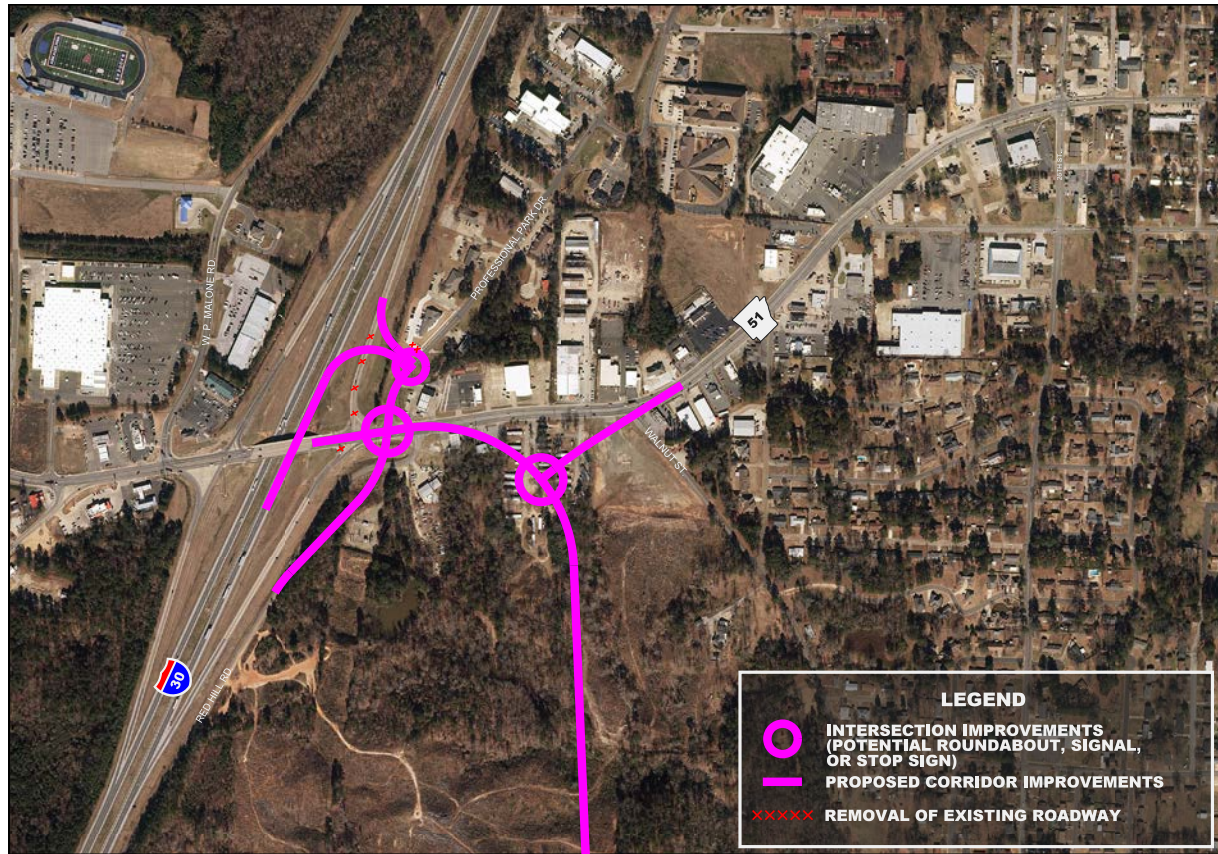


**LEGEND**

-  PROPOSED CORRIDOR ALIGNMENT A
-  PROPOSED CORRIDOR ALIGNMENT B
-  PROPOSED CORRIDOR ALIGNMENT C
-  PROPOSED CORRIDOR ALIGNMENT D
-  PROPOSED CORRIDOR ALIGNMENT E
-  PROPOSED CORRIDOR ALIGNMENT F
-  PROPOSED CORRIDOR ALIGNMENT G
-  PROPOSED BRIDGE STRUCTURE

**SEE EXHIBITS FOR INTERCHANGE  
ALTERNATIVES 1-4**

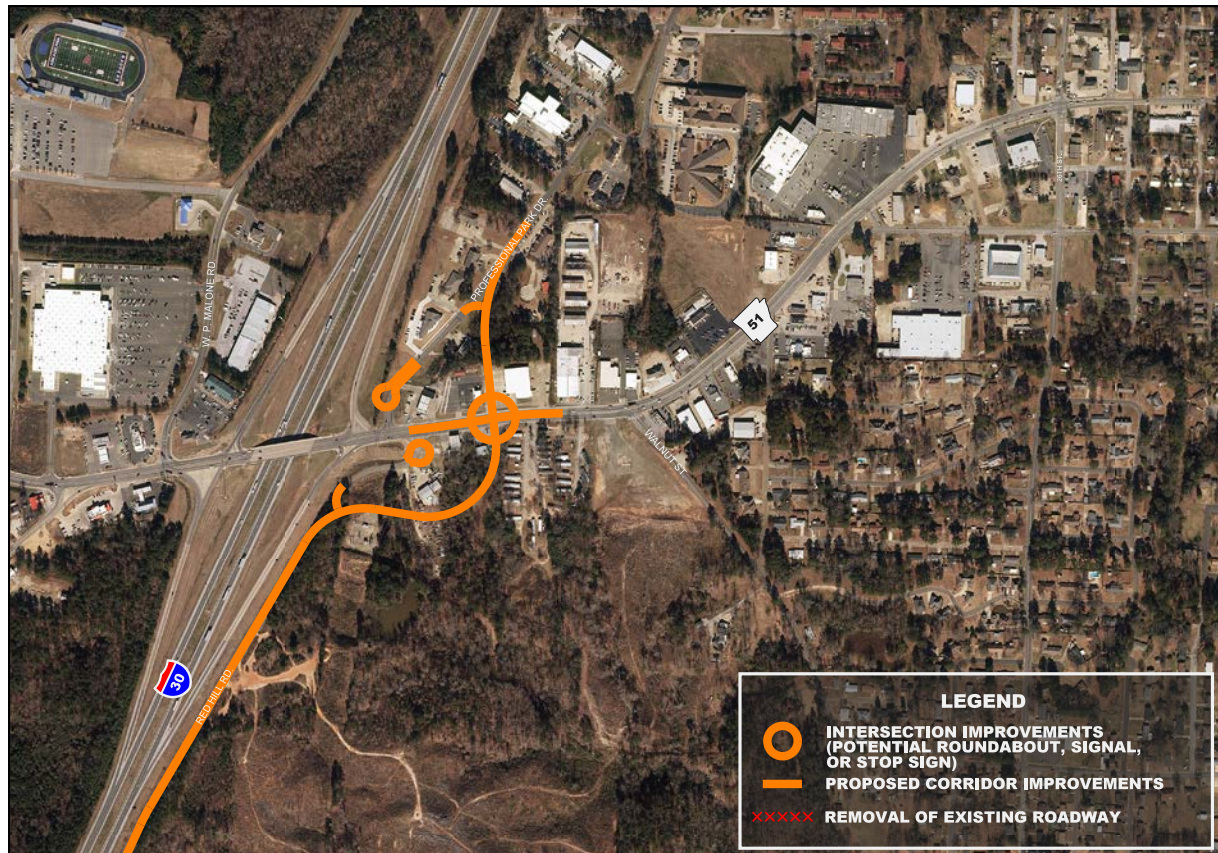




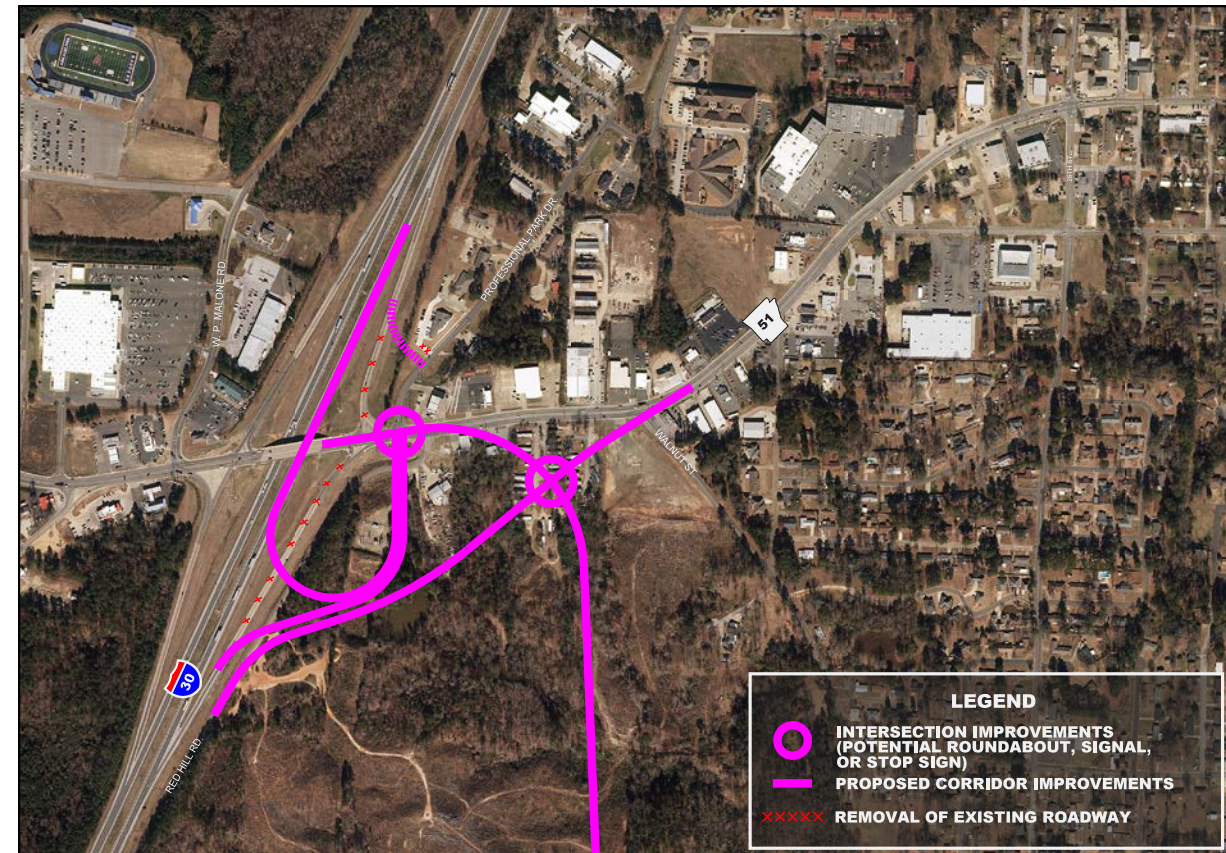
I-30/Hwy. 51 Interchange  
ALTERNATIVE 1



I-30/Hwy. 51 Interchange  
ALTERNATIVE 2



I-30/Hwy. 51 Interchange  
ALTERNATIVE 3



I-30/Hwy. 51 Interchange  
ALTERNATIVE 4